

24/7 ONLINE LIVE WIND REMOTE MONITORING SYSTEM



Effortless, quick to install and easy to maintain.

Logic Energy is a leading provider of Remote Live Monitoring systems for the Renewable Sector. Our system has been developed with simplicity and value for money in mind, to enable **efficient** and **reliable** monitoring of any wind installation.



- o 14 Channels
- o 4 anemometer inputs
- o 4 digital inputs
- o 2 wind vanes
- o 4 analogue inputs
- o 1 Hz Sampling rate
- o Real time data
- o Cell tower location
- o Worldwide GPRS coverage
- o Advanced charting and reporting tools online
- o Mobile access
- o Online LeSENSE management system
- o Automatic 365 online backup

HARNESS YOUR ENERGY POTENTIAL REAL TIME ONLINE

LeNETmobile and LeSENSE have been designed to work together in order to provide an extremely simple installation experience together with one of the most reliable systems for Live Remote Monitoring solutions. LeNETmobile and LeSENSE work continuously 24/7 to provide status reports and most importantly **peace of mind**. If something needs your attention, you will automatically know it the moment it happens.

Our system is hosted on a global SAS70 Type II certified data centre and it uses the latest in data centre technology, making it one of the most secure and reliable in the world.

What this means to you, is that your data is safer with our system than with any other field data logger, thanks to a continuous 365 days live data backup.



Instant live remote energy monitoring...Everywhere

- o Anemometer inputs (wind speed) 4
[Dry contact, 24Vdc or Sine wave]
- o Wind direction inputs (analogue) 2
- o Digital inputs (counters) 4
[Dry contact, 24Vdc]
- o Analogue inputs 4
*[0 to 5Vdc, 0 to 3.3vdc, 0 to 20mA]
(temperature, pressure, humidity, solar radiation, etc)*
- o Data sampling rate 1Hz
- o Recording interval on microSD card 10 min.
- o microSD card capacity 10 years
- o Reporting interval to LeSENSE portal 10min.
- o Data storage on LeSENSE portal Unlimited
- o 24/7 web browser access ✓
- o Remote setup ✓
- o GPRS automatic live monitoring ✓
- o Low power consumption Avg 5mA

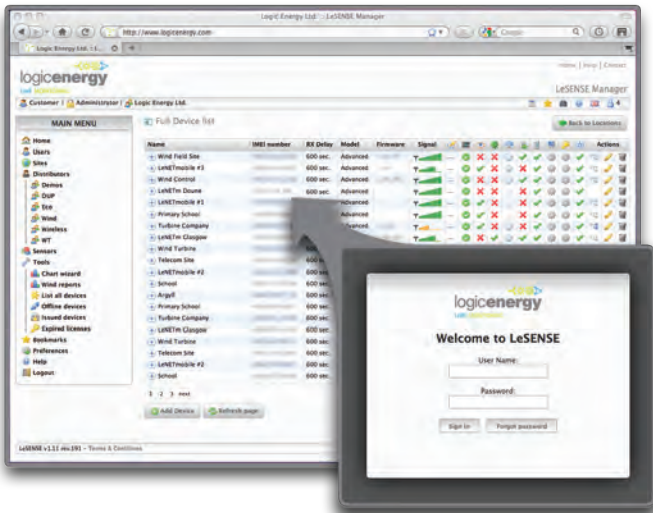


24/7 ONLINE **LIVE WIND** REMOTE **MONITORING** SYSTEM

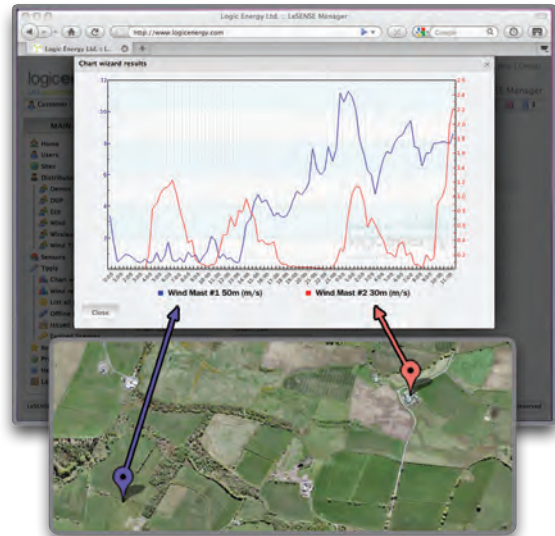


LeSENSE brings high reliability and simplicity to your wind site assessments

LeSENSE web portal and LeNETmobile communicate to provide live information of your wind data remotely. As soon as wind data is available, it is updated onto LeSENSE for further analysis and backup. This setup allows for a continuous data feed of remote wind data, providing real time status of all your sites and installations, plus automatic alerts to your inbox.



Powerful web-based monitoring and management



Easy data comparison from different sites

LOGIC ENERGY PUTS YOU IN CONTROL

LeSENSE web portal allows you to setup your own alerts, and set users with access limited to the sites you want via LeSENSE's hierarchical architecture. One login gives you access to all your sites, all your clients' data, all your alerts, wind reports and charting tool, data comparison between different sites and much more.

- o Max, STD and Average wind speed charting online for visual inspection
- o Individual sensor alerts to different users with alerts log-book built-in
- o Remote setup, no need to enter slopes and offsets onsite.
- o Custom sensor creation with flexible mathematical algorithms
- o Self-monitoring system
- o Summary wind reports for selected dates
 - a. Frequency distribution
 - b. Diurnal distribution
 - c. Wind roses
- o Multi-site and sensor comparison tool. Allows you to compare data from completely different sites
- o Individual user and site access levels. Manage all your installations, clients, distributors from a single point of access.

Instant live remote energy monitoring...Everywhere

