



SBB

CREATOR
OF THE ALUMINIUM
MODULAR TOWER

ACIER PROFILÉ SBB INC.

ISO 9001 : 2008

SBB 280 MET MAST

NEW GENERATION OF LOW COST / HIGH PERFORMANCE MET MAST

- » Lightweight and modular aluminium mast sections
- » Easy / quick installation & maintenance
- » Safe and easy access to instruments for maintenance
- » Rust free & unlimited usage
- » No heavy equipment required for installation
- » Superior technical support from our engineers

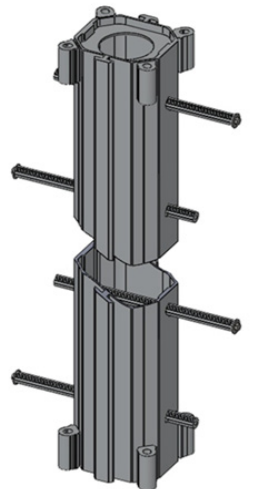
In operation since 1973, SBB has a vast experience in the manufacturing of metallic structures of all kinds, often built to customer specifications.

In 1998, we created the 412 aluminium modular tower, used by utility companies in about 40 countries worldwide to quickly restore power to damaged transmission lines. In 2007 we adapted it to serve as a met mast for the wind energy industry.

In 2013, we have decided to capitalize on our success with the 412 model and launch a new type of met mast, called the 280. This model is a high performance, low cost alternative for sites with tough conditions but without extreme conditions.

The 280 is easy to transport, easy to install without heavy equipment and easy to climb on when maintenance of the instruments is required. It can also be installed and dismantled an unlimited number of times.

SBB is a turnkey solution provider, offering everything from the tower, the instruments, the equipment as well as the installation for 60m, 80m and 100m towers.



NEW GENERATION OF LOW COST HIGH PERFORMANCE MET MAST

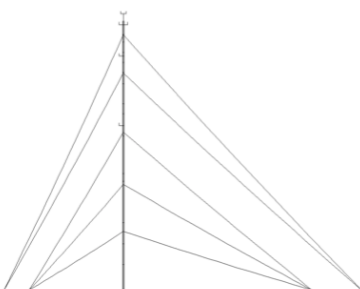


SPECIFICATIONS

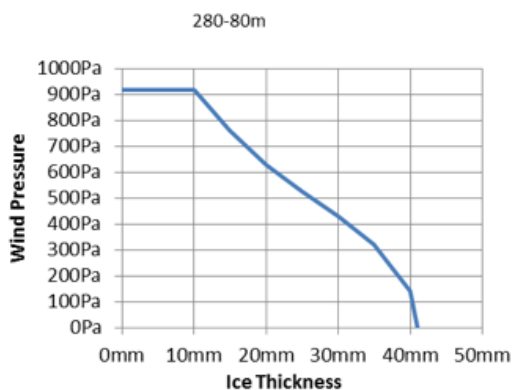
DESCRIPTION

280-80m

» Mast Material	» Aluminium 6061-T6
» Mast Section Size	» 27 sections of 2.85m
» Top of the mast (including foundation)	» 77.25m
» Top instrument (vertical tip of the boom)	» 80.20m
» Number of Guys	» 15 (5 levels of 3 guys at 120°)
» Type of Guys	» 7/16" EHS (11.1mm) 7 strands UTS = 92.5kN (60% of UTS = 55.5kN)
» Guy / anchor radii	» 54m, 68m
» Number of Anchors	» 6
» Type of Anchor	» Anchor Plates



Mast silhouette



Ice density: 900kg/m³
Importance factor: 0.8 (Class III)
Load comb. factor (ψ) 0.5 (for "Wind + Ice" load)

Designed as per CSA S37-01 (R2011)

- Options:
 - 3 or 4 azimuth as per client's preferences.
 - High visibility paint (Red and White).
- Instrumentation Boom, Guy Wire and Step Bolts may be installed every 35cm.
- Different foundations available:
 - Precast concrete foundation (approx. 2000 kg).
 - Mast foundation may also be directly anchored to the rock.
- Rock anchors (rock bolts) available.
- Standard size mast section (2850mm).
- "As built" stamped drawings by a Professional Engineer when the installation is performed by an SBB certified crew.



ACIER PROFILÉ SBB INC.

3005, des Bâtisseurs
Terrebonne, Québec, Canada J6Y 0A2
T: +1.450.968.0800 F: +1.450.968.0050
www.sbb.ca | info@sbb.ca

